

# Installation Manual

BMW X4 5DR  
BMW-X4-5-A-18



## COMPONENTS INCLUDED



## FIXING CLIPS



CL-M04 x 6



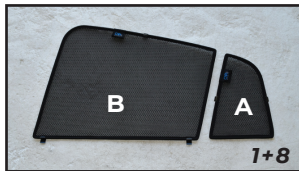
CL-M13 x 4



# Side Shade (A) Installation

BMW X4 5DR  
BMW-X4-5-A-18

## COMPONENTS NEEDED:



### STEP #1

ATTACH CLIPS ON SHADE EDGES



### STEP #2

POSITION THE SIDE SHADE



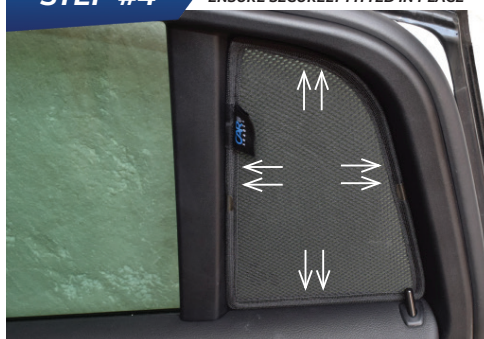
### STEP #3

INSERT CLIPS BEHIND INTERIOR TRIM



### STEP #4

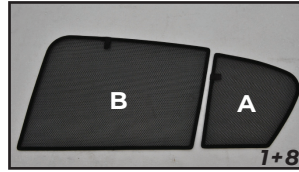
ENSURE SECURELY FITTED IN PLACE



# Side Shade (B) Installation

BMW X4 5DR  
BMW-X4-5-A-18

COMPONENTS NEEDED:



CL-M04 x 2



CL-M13 x 4

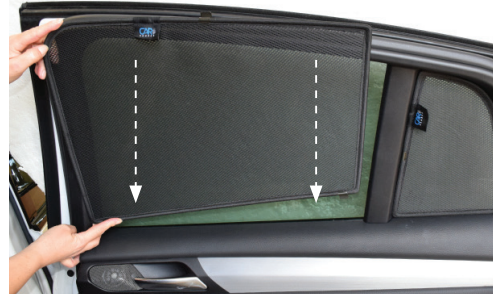
## STEP #1

ATTACH CLIPS ON SHADE EDGES



## STEP #2

POSITION THE SIDE SHADE



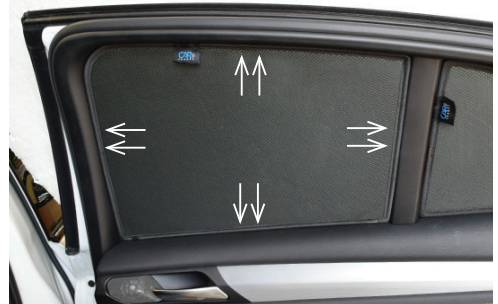
## STEP #3

INSERT CLIPS BEHIND INTERIOR TRIM



## STEP #4

ENSURE SECURELY FITTED IN PLACE



**CAR**  
SHADES