

# Installation Manual

FORD KUGA 5DR  
FOR-KUGA-5-C



## Shades



Side Shades



Port Shades



Tailgate Shades

## Fixing Clips



CL-M12 x 6



CL-M03 x 4



CL-M14 x 1



CL-M02 x 8



# Installation

FORD KUGA 5DR  
FOR-KUGA-5-C

## Components Needed



Side Shades



CL-M02 x 4



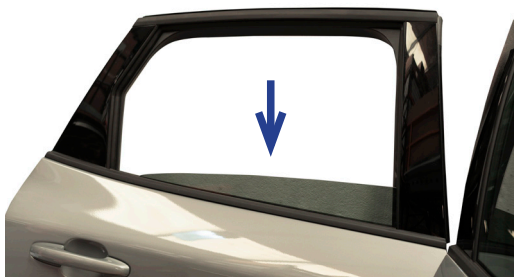
CL-M03 x 4

## Side Shade Installation

### STEP 1



### STEP 2

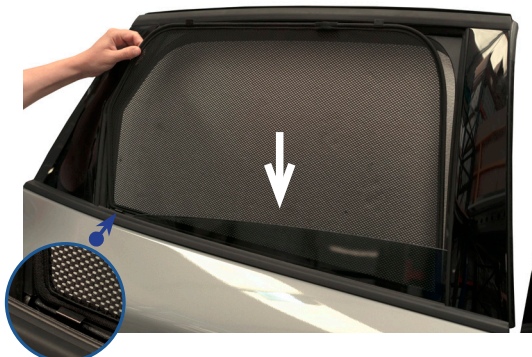


Shade must be fitted from the outside.

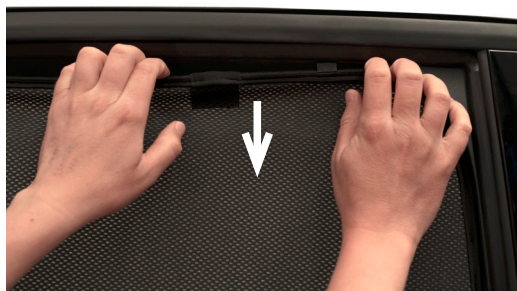
### STEP 3



### STEP 4



### STEP 5



### STEP 6



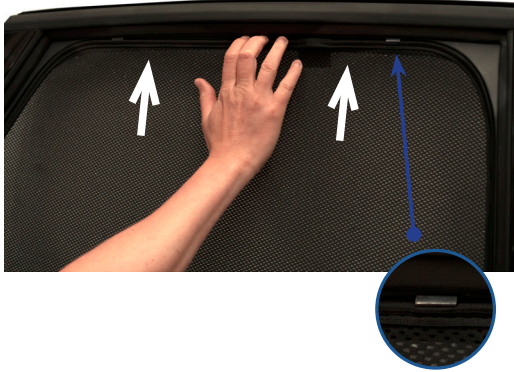
# Installation

FORD KUGA 5DR  
FOR-KUGA-5-C



## Side Shade Installation

### STEP 7



### STEP 8



*Repeat this whole process for the other side*

# Installation

FORD KUGA 5DR  
FOR-KUGA-5-C

## Components Needed



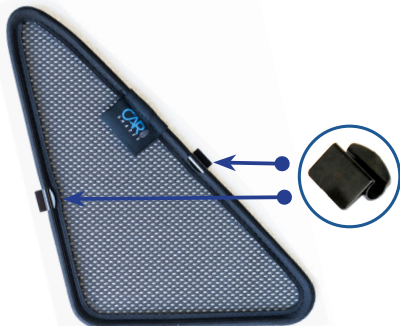
Port Shades



CL-M02 x 4

## Port Shade Installation

### STEP 1



### STEP 2



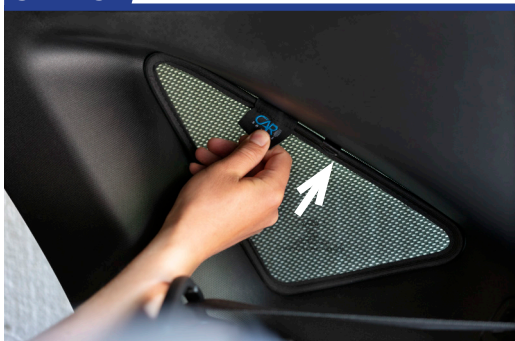
### STEP 3



### STEP 4



### STEP 5



### STEP 6



**Repeat this whole process for the other side.**

# Installation

FORD KUGA 5DR  
FOR-KUGA-5-C

## Components Needed



Tailgate Shades



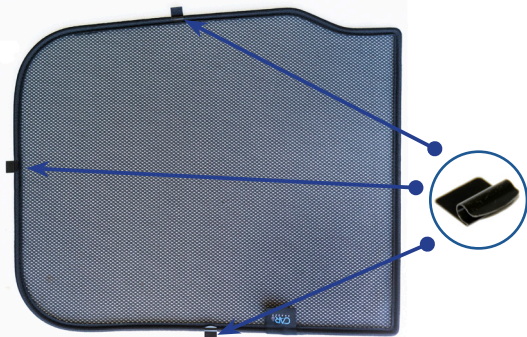
CL-M12 x 6



CL-M14 x 1

## Tailgate Shade Installation

### STEP 1



### STEP 2



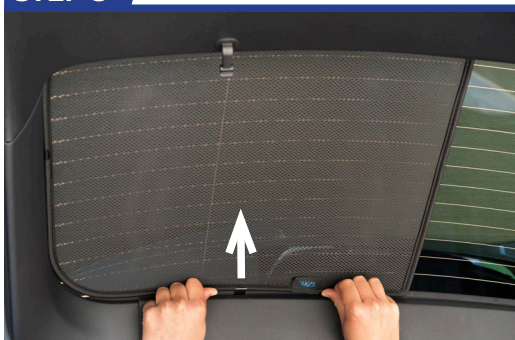
### STEP 3



### STEP 4



### STEP 5



### STEP 6



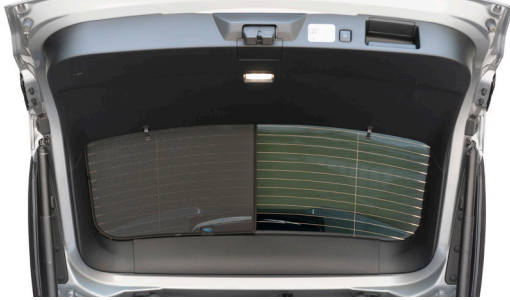
# Installation

FORD KUGA 5DR  
FOR-KUGA-5-C



## Tailgate Shade Installation

### STEP 7

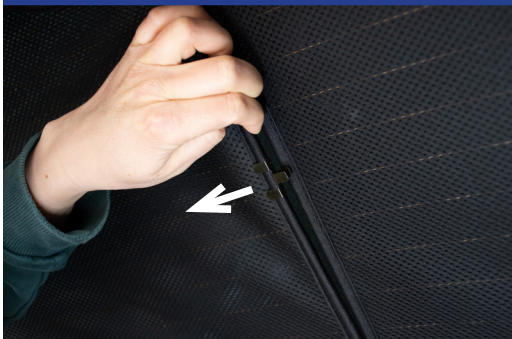


Repeat this whole process for the other side

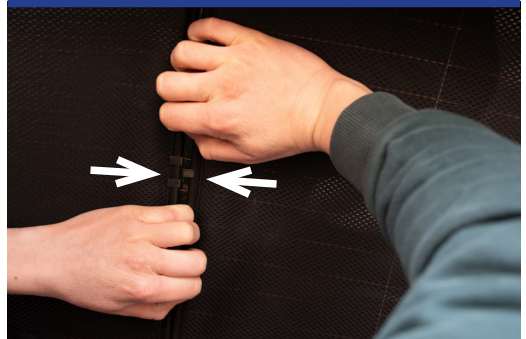
### STEP 8



### STEP 9



### STEP 10



### STEP 11

