

# Installation Manual

KIA STONIC 5DR  
KIA-STON-5-A-18



## COMPONENTS INCLUDED

## FIXING CLIPS



CL-M13 x 4



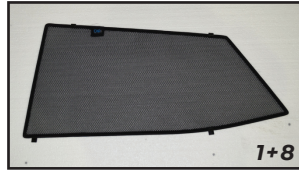
CL-M02 x 4



# Side Shade Installation

KIA STONIC 5DR  
KIA-STON-5-A-18

COMPONENTS NEEDED:



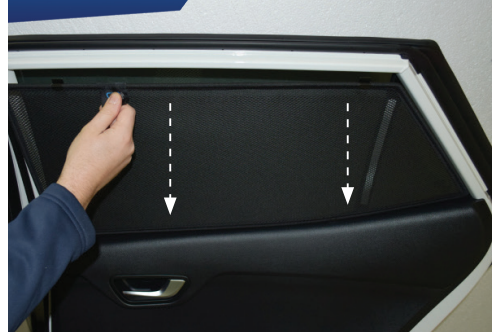
## STEP #1

ATTACH CLIPS ON SHADE EDGES



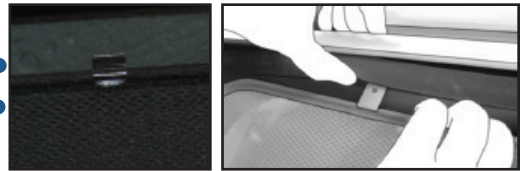
## STEP #2

POSITION THE SIDE SHADE



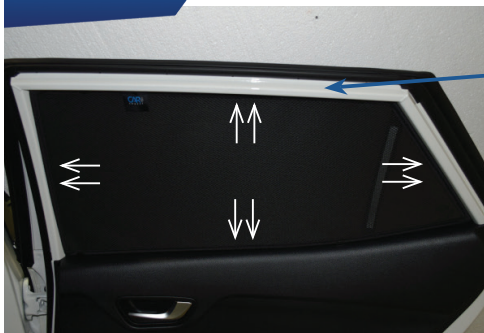
## STEP #3

INSERT CLIPS INSIDE WEATHERSTRIP



## STEP #4

ENSURE SECURELY FITTED IN PLACE



**CAR**  
SHADES