

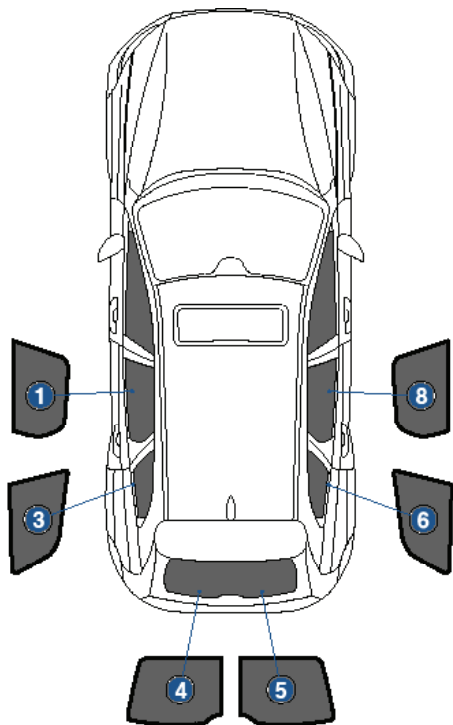
# Installation Manual

VOLVO XC60 5DR  
VOL-XC60-5-B



## COMPONENTS INCLUDED

## SHADES



## FIXING CLIPS



CL-M02 x 10



CL-M12 x 2



CL-M13 x 2



CL-M14 x 1

# Side Shade Installation

VOLVO XC60 5DR  
VOL-XC60-5-B

## COMPONENTS NEEDED:



CL-M02 x 2



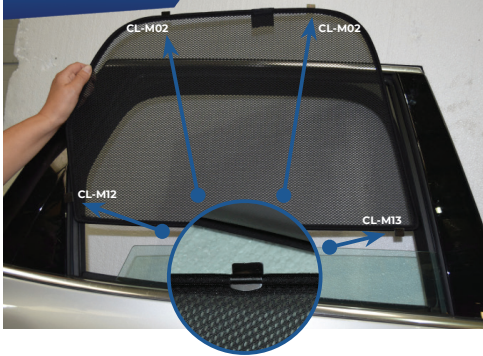
CL-M12 x 1



CL-M13 x 1

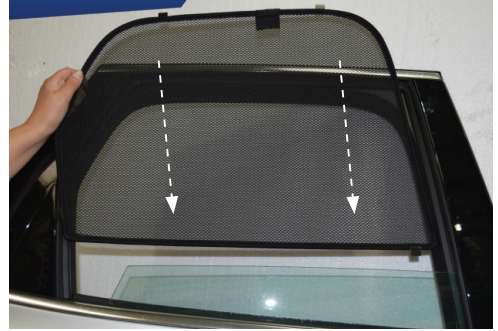
### STEP #1

ATTACH CLIPS ON SHADE EDGES



### STEP #2

POSITION THE SIDE SHADE



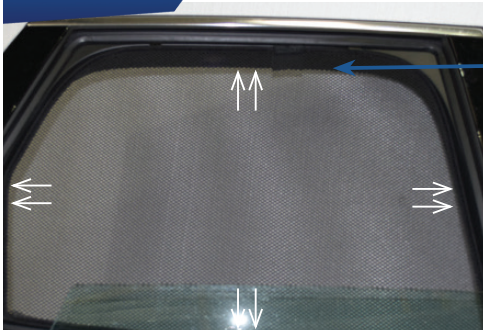
### STEP #3

INSERT CLIPS INSIDE WEATHERSTRIP



### STEP #4

ENSURE SECURELY FITTED IN PLACE

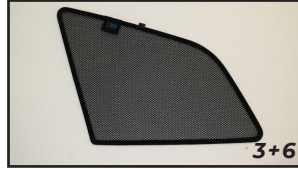


**CAR**  
SHADES

# Quarter Light Shade Installation

VOLVO XC60 5DR  
VOL-XC60-5-B

## COMPONENTS NEEDED:



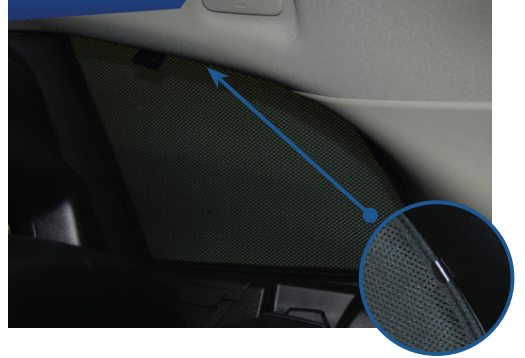
### STEP #1

ATTACH CLIPS ON SHADE EDGES



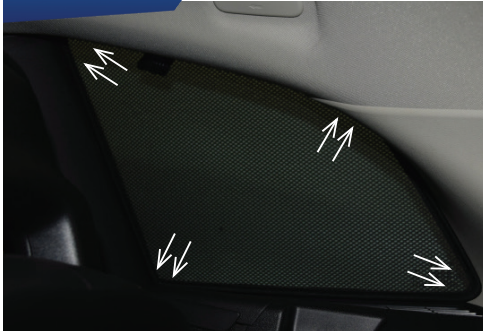
### STEP #2

INSERT CLIPS BEHIND INTERIOR TRIM



### STEP #3

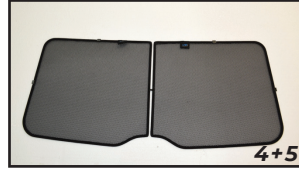
ENSURE SECURELY FITTED IN PLACE



# Rear Shade Installation

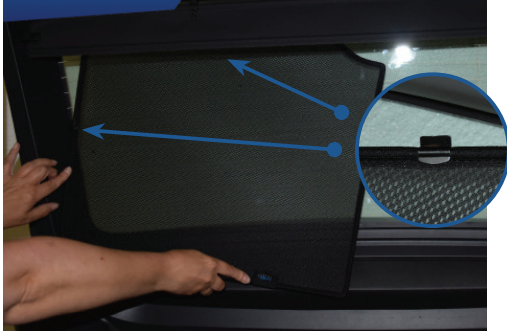
VOLVO XC60 5DR  
VOL-XC60-5-B

COMPONENTS NEEDED:



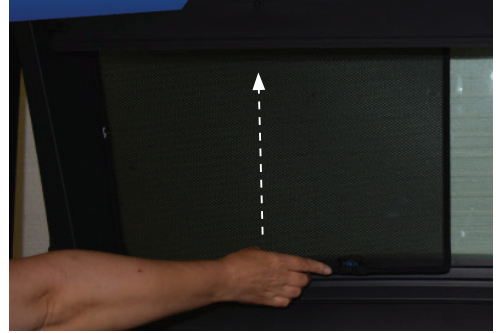
## STEP #1

ATTACH CLIPS ON SHADE EDGES



## STEP #2

POSITION THE REAR SHADE



## STEP #3

INSERT CLIPS BEHIND INTERIOR TRIM



## STEP #4

REPEAT THE PROCESS ON OTHER SHADE



## STEP #5

ENSURE SECURELY FITTED IN PLACE



**CAR**  
SHADES